



Apartment (EPC Rating: C)

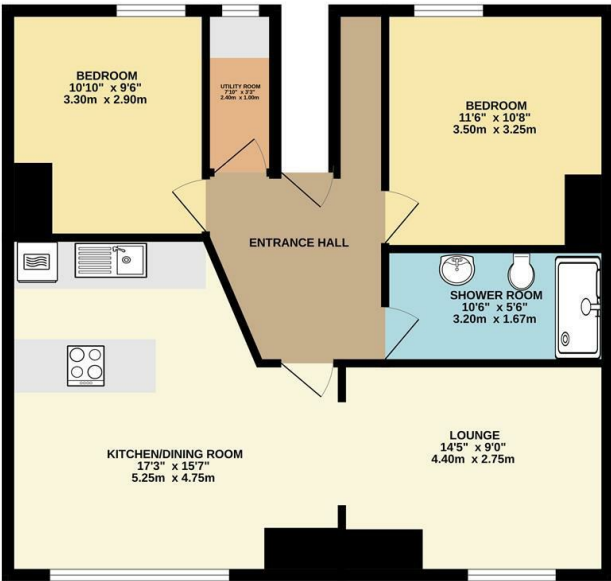
THORNHILL ROAD, MANNAMEAD, PLYMOUTH PCM

£1,275

2 Bedroom Apartment located in Plymouth

| STYLISH Living | PANORAMIC Views | SOUTH FACING Living Room | Two DOUBLE Bedrooms | FURNISHED | EPC Rating C | Council Tax Band A | Deposit £1494.23

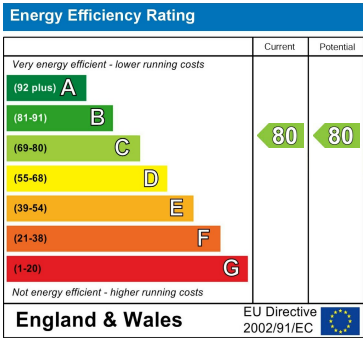
GROUND FLOOR
727 sq.ft. (67.5 sq.m.) approx.



TOTAL FLOOR AREA: 727 sq.ft. (67.5 sq.m.) approx.
While every attempt has been made to ensure the accuracy of the floorplan contained here, measurements of doors, windows, rooms and any other items are approximate and no responsibility is taken for any error, omission or mis-statement. This plan is for illustrative purposes only and should be used as such by any prospective purchaser. The services, systems and appliances shown have not been tested and no guarantee is given to their operability or efficiency not be given. Made with Metropix (2020)

Council Tax Band
C
Energy Performance Graph

Call us on
01752 201010
enquiries@langtownandcountry.com
www.langtownandcountry.com



Agents Note: Whilst every care has been taken to prepare these particulars, they are for guidance purposes only. All measurements are approximate and are for general guidance purposes only and whilst every care has been taken to ensure their accuracy, they should not be relied upon and potential buyers are advised to recheck the measurements.